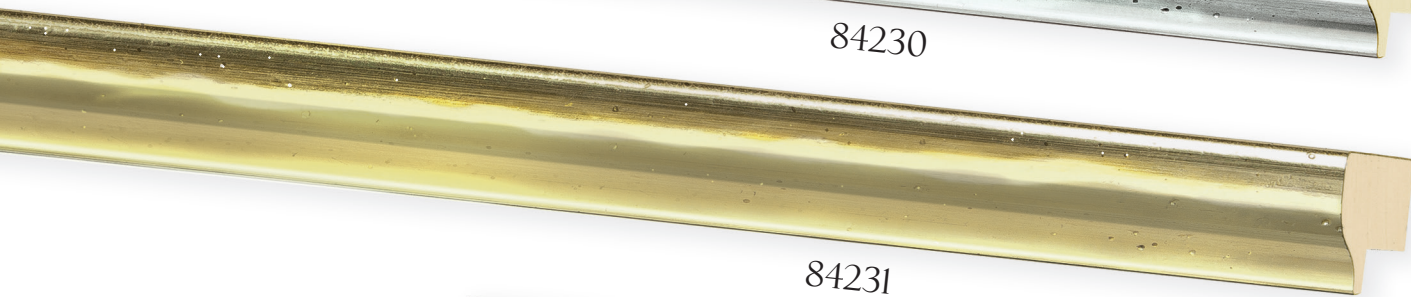


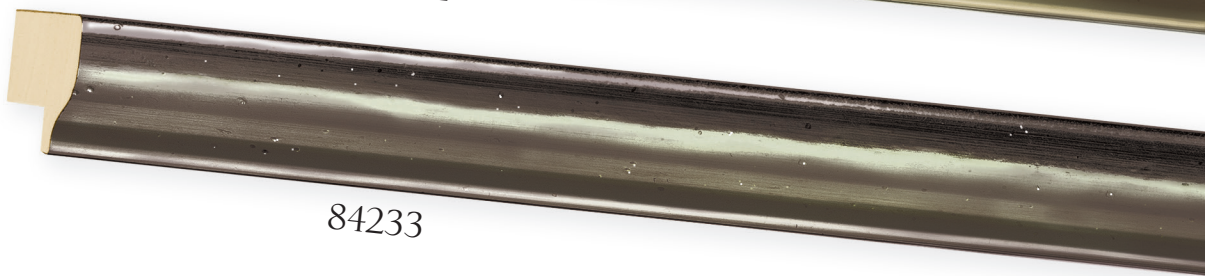
84230



84231



84232



84233

NOVO



84234



84235



84236



84237



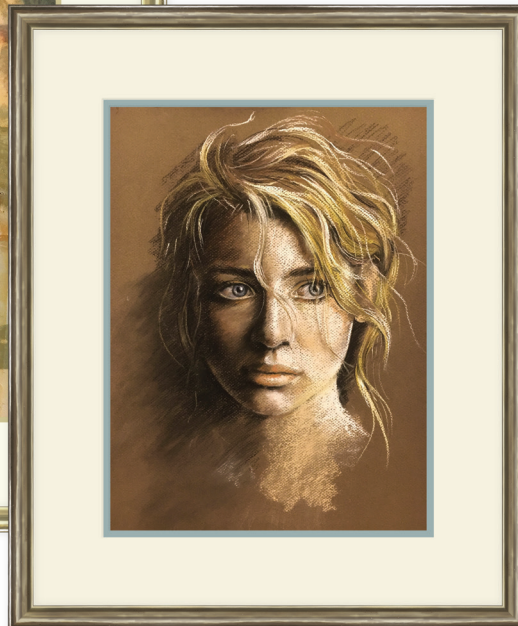
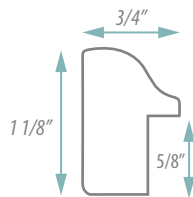
84238



DUNE



OMEGA



Art (top): Watercolor collage, Alexandra Sheldon c.2014

Art (right): Pastel portrait, Pavel Meknikov c.2005

NOVO

Novo is a collection of four mouldings with a brilliant metal finish in handsome hues of gold, bronze, silver and pewter. The fine 3/4" swan profile is designed to surround framed works with an elegant radiance and tailored edge to complement the composition and colors within the artwork. This balance of scale and luster is ideal for an array of today's interior design schemes, in addition to working in concord with both neutral and colorful settings.

Another feature of the finish is its texture. The shiny metal surfaces are lightly hammered and pitted, softening its sheen while creating interesting plays of reflection and light.

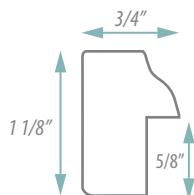
◁ Tonal Harmony

Novo's warm and cool tones are rich yet understated, playing well with fine art pieces where color and subject take center stage.



Novo and Dune collections are handmade in Italy

DUNE



The Dune Collection features five mouldings with weathered painted wood grain finishes rendering colors subdued by natural elements. The panel of color is on the profile's flat top face, with a white back edge and white inside lip that create crisp borders and contrast. The reverse swan sloped lip gives the simple geometric profile a soft line that leads the eye to the artwork adding to the overall light, airy feel of the collection.

Dune is designed for framing pieces that have soft color tints and fine details. This makes the collection well-suited for antique color plate prints, etchings, watercolors, shabby-chic art and decor, photography, and pastel drawings. The 3/4" profile is the perfect scale for artwork that needs a subtle touch of color and a visually lightweight framing solution.



Art (top): **Positano**, Jack Young c.2016

Art (left): **Nautilus Spiral**, Rene Leconte c.1991