

ΩMEGA⁺

MOULDING COMPANY



UNLEASH YOUR
CREATIVITY

New moulding collections
to inspire the designer within



UNLEASH YOUR **CREATIVITY**

We are pleased to present our newest collections for 2024, designed to freshen up your walls with looks that respond to many new design trends in the home decorating market.

You will find classic shapes that have been brought up to date with new finishes combined with some snazzy color tones, to help you create that one-of-a-kind custom frame project that keeps your favorite customers returning to you. You'll love working with these new mouldings produced at some of the best factories in the world, made to meet the highest quality standards of framers who prefer working with the best materials.

Although simple and modern has been the trend for years, Omega's vision for post-pandemic design trends includes warming up those cool tone rooms with gold, bronze, and some tasteful color shades.

We hope you enjoy working with these new designs and discover new ways to use these mouldings to Unleash Your Creativity and surprise your customer with an awesome custom framed project.

Omega customers can use promo code C824 for an additional discount on the purchase of the mouldings in this catalog in the month of February 2024, when placing orders using our online ordering system.

If you are not currently an Omega customer and would like to connect with the sales professional serving your area, please **scan the below QR code** with your phone and provide the phone number or email address you prefer so we may contact you.

You may also call us at 631-210-6559 to provide your contact information.



Scan Here

SPECTRA

COLLECTION

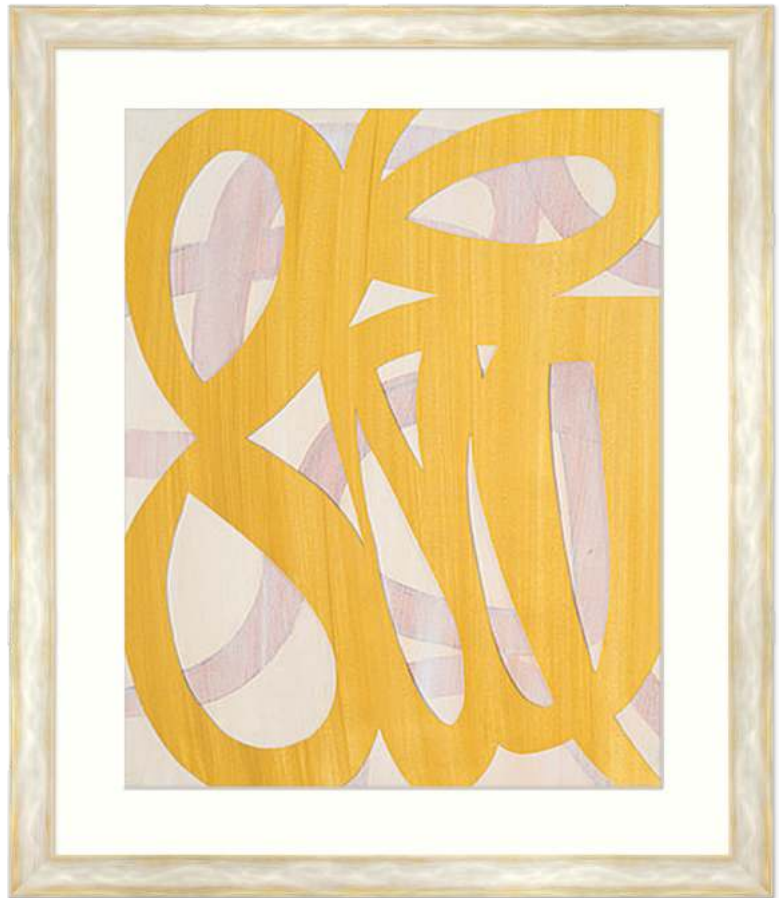
Spectra is a unique and striking collection that features gleaming metallic surfaces embellished with vibrant tinges of color incorporated by linear brush strokes.

Bright silver is the foundation for Sunflower Yellow (84317 & 84322), Cobalt Blue (84318 & 84323), Mandarin Orange (84316 & 843210, and Coal Black (84319 & 84324).

This group is complemented with a bright gold finish, enhanced by orange brush lines (84315 & 84320).

The scoop profile is updated with a chiseled back crest, creating a sharp geometric point that creates a bright pencil-thin highlight along the outside of the frame.

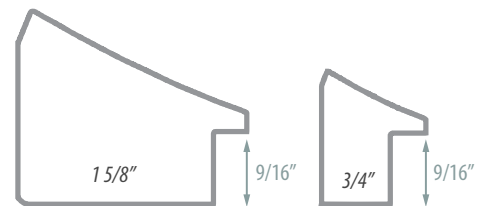
This collection is well-suited for designing framed works with creative colorways, integrating interior design palettes within a piece, and bringing out desired tones within a color composition. Framers and designers will enjoy Spectra's fresh color options, allowing one to explore modern framing solutions for graphic, transitional works; integration of fine art genres such as impressionism, or fine art treatments such as watercolors, lithography, oil paintings and pastels.



△ Art (above): **Gold Lucky 8**, Maria Lobo c.2022
Spectra **84317** (1 5/8" silver & sunflower yellow)



The Spectra Collection is handmade in Italy



A Brilliant & Colorful Relationship

The high luster of the metallic finish coupled with colorful hues invites new projects and picture framing solutions to be imagined. The cool, neutral reflective silver is a glamorous backdrop to showcase the accents of color which will desirably boost or complement colors within the framed artwork.

Spectra's bright gold selections are best for bringing out warmth and richer tones in artwork, and when incorporating framed art into interior spaces that call for brilliance and pizzazz.

◀ (Pictured left): **Detail of Spectra's 1 5/8" profiles**
In order from left to right: 84319 (silver/black), 84318 (silver/blue), 84316 (silver/orange), 84317 (silver/yellow), 84315 (gold/orange).



1 5/8" silver & mandarin orange scoop • 84316



1 5/8" silver & sunflower yellow scoop • 84317



1 5/8" gold scoop • 84315



• 1 5/8" silver & cobalt blue scoop

84318



• 1 5/8" silver & coal black scoop

84319

SPECTRA

by Omega Moulding



84320



• 3/4" gold scoop

84321



• 3/4" silver and mandarin orange scoop



84322 • 3/4" silver and sunflower yellow scoop



84323 • 3/4" silver and cobalt blue scoop



84324 • 3/4" silver and coal black scoop

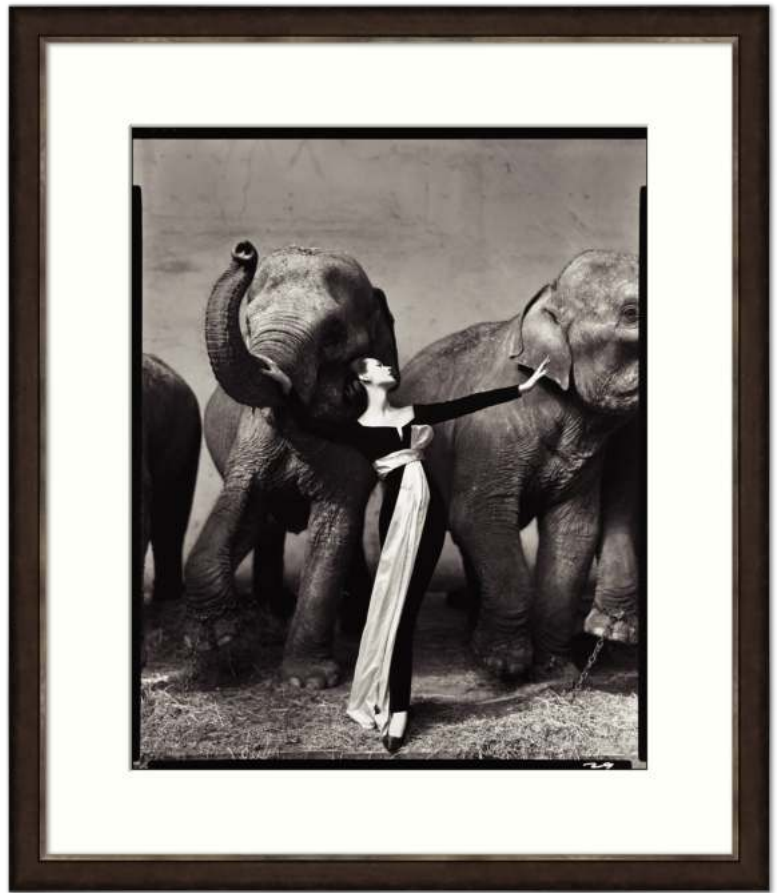
ARIELLE

Arielle is a geometric transitional style collection, made with simplicity and compatibility in mind. With metallic finishes that are rendered with distressed, variegated patinas, it is designed to coordinate with many color compositions and genres of artwork. The profile is designed to also be an interior stacking element in constructing multi-frame arrangements with its 1" back edge, while still providing a 5/8" rabbet depth. The raised inside lip finishes off the look with a bright contrast border that embellishes the subject matter, highlighting the artwork and leading the eye inward.

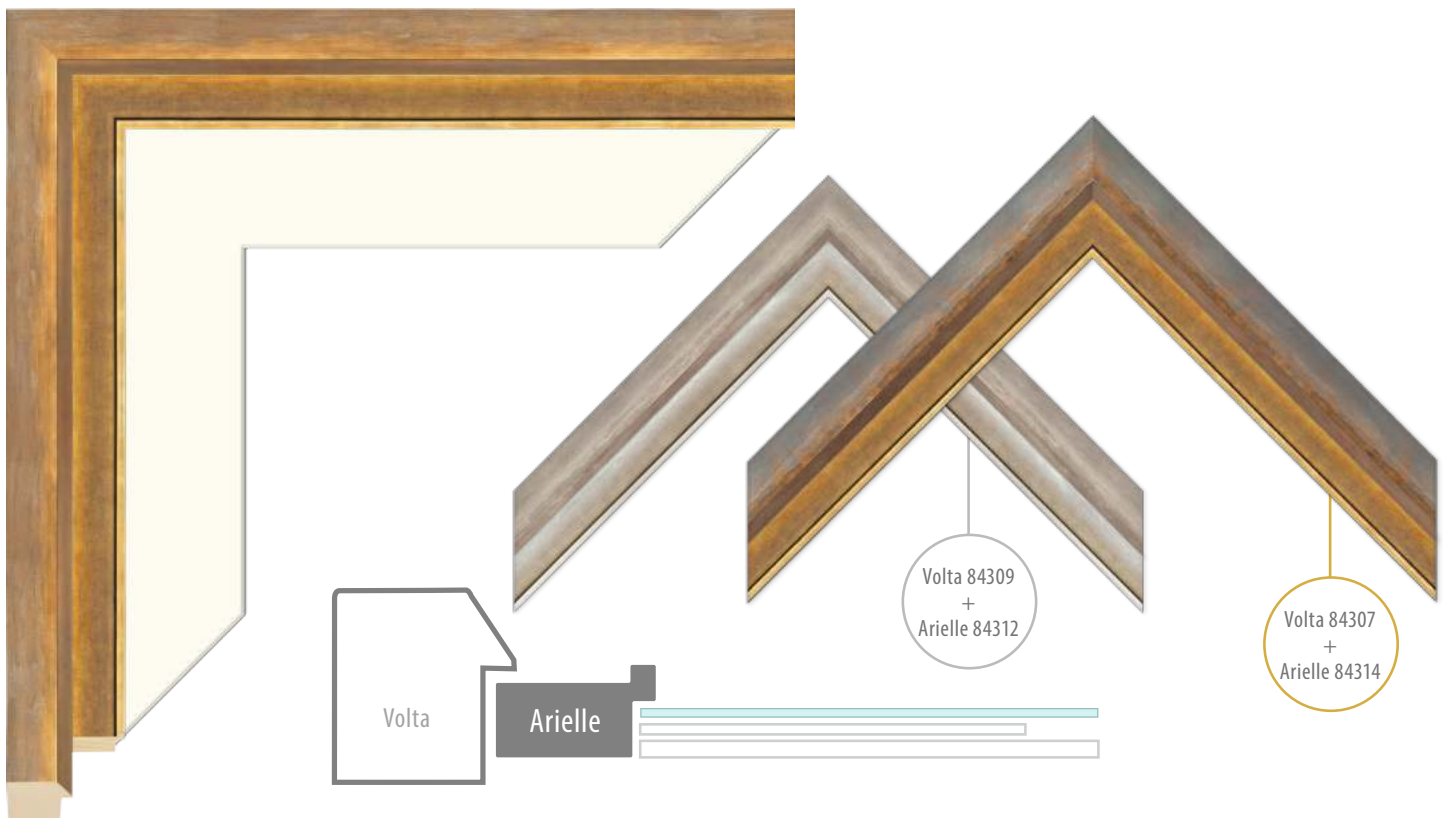
The collection has been launched along with the new larger additions to the Volta Collection. Volta's new profile boasts a deep canvas-depth rabbet height which can cap these Arielle items, explicitly made to work in harmony with the colors, tones and luster of Volta.



The Arielle Collection is handmade in Italy



△ Art (above): **Dovima with Elephants**, Richard Avedon c.1955
outfitted with Arielle's opulent Obsidian finish (84313, 1 3/4")



△ Pairing Arielle with Volta invites creativity designing striking combinations as well as providing new solutions for framing larger pieces and wall mirrors.

ARIELLE

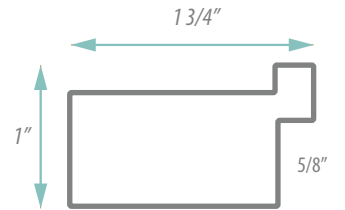
by Omega Moulding



84314



84311



84312



84313

Volta

The Volta Collection is a neomodern collection, but it's timeless in that what you can design with it, is endless. Created to allow designers to produce elegant picture framing solutions, the collection uses soft muted hues that break away from neutral color schemes. This lends it to be used in a variety of interior environments as well as with more styles of art, as it blends warm and cool tones, and works simultaneously with both variegated and smooth textures. Geometric in shape, the profile can be easily integrated in modern and transitional interior design plans.

The overall look of Volta ranges from serene to dramatic. Softer subtle tones of silver in 84274 (fog grey), pewter in 84273, and champagne verdigris in 84271 (moss), invite the designer to explore more within the neutral palette. Meanwhile, the colorful contrast of 84269 (charcoal) uses black, copper, and oxidized silver; 84272 (blue) employs a color story of blues and violet upon gold, copper and pewter. Even gold, in 84270, (dark sand) is a visual treat surely to be used in any stretch of the imagination.



△ Art (above): *Moonrise*, Maxime Maufra c.1901



The Volta Collection is handmade in Italy

◀ A Finer Blend

With an attractive variety of color hues, textural tones and tinted metal patinas, Volta's unique mix of attributes works well on art from different eras. From the layered softness of impressionism (above), to more graphic illustrative work (left), this collection will inspire one's creative side to emphasize desired colors and details in the artwork that will elevate each piece to treasured status.



The beveled nose surrounding the artwork is gilded, creating a brightly edged border that helps to draw the viewer's focus toward the subject.

◀ Art (above): *Setting Intentions*, Duy Huynh c.2014

Volta



84271



84272



84269



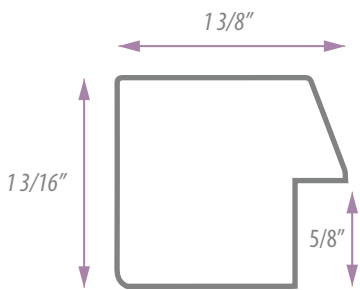
84270



84273



84274



★ **New 2" Profile**



The Volta Collection is handmade in Italy

Volta

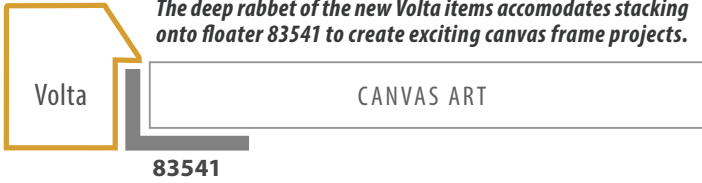


Five new items have been added to the popular Volta Collection, introducing a wider profile with a canvas-depth rabbet height to extend Volta's range of picture framing and design solutions. The collection has been launched alongside the new Arielle Collection, with Volta's deeper rabbet height designed to stack with Arielle profiles, and matching the collection's metallic tones and luster.

The overall look of Volta ranges from serene to dramatic. Softer subtle tones of silver in 84310 (fog grey), pewter in 84309, invite the designer to create more within the neutral palette. Meanwhile, the colorful contrast of 84306 (charcoal) uses black, copper, and oxidized silver; 84308 (blue) employs a color story of blues and violet upon gold, copper and pewter. Even gold, in 84307, (dark sand) is a visual treat surely to be used in many framing projects.

★ **Volta is a Floatmate profile!**

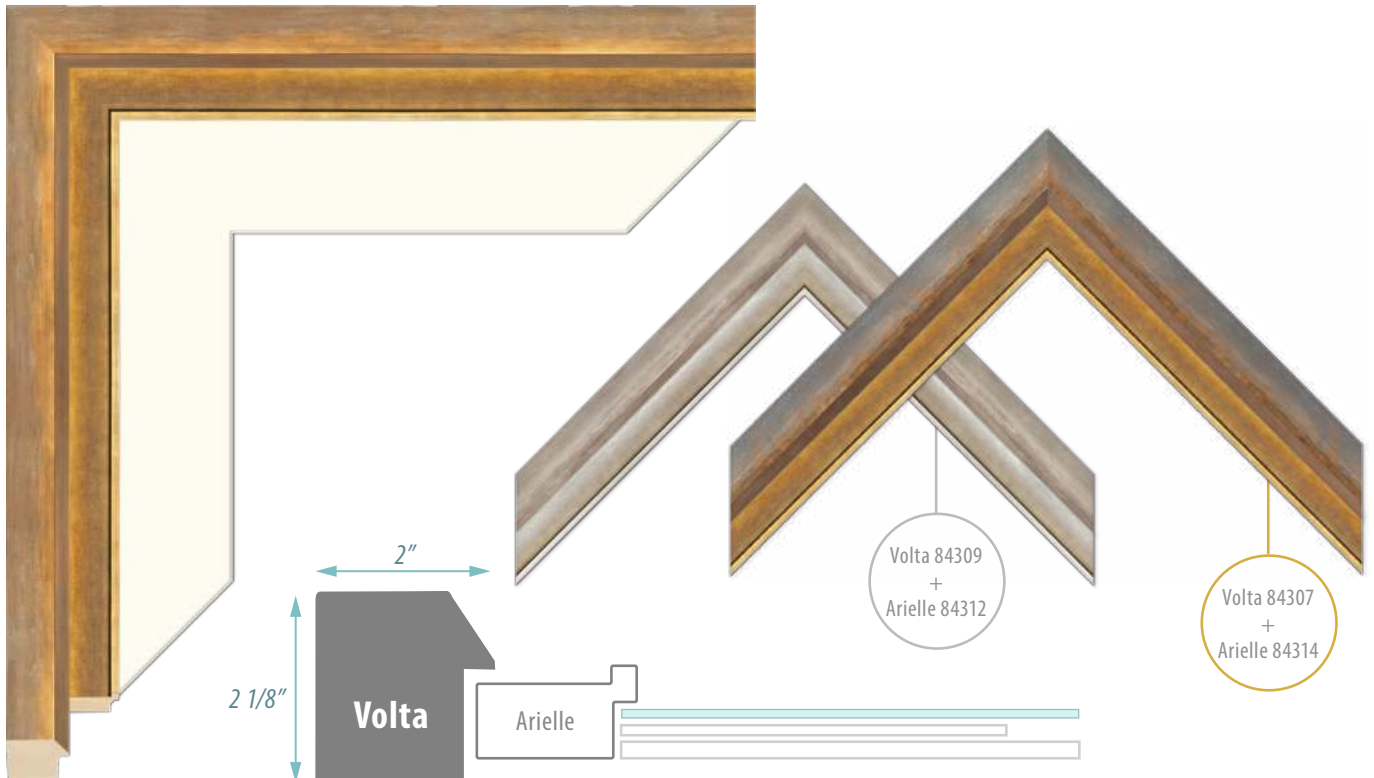
The deep rabbet of the new Volta items accommodates stacking onto floater 83541 to create exciting canvas frame projects.



Canvas Stretchers & Liners



The new 1 5/16" canvas depth rabbet accommodates stretchers 79170, 83890, 83393, 83405, 79169, 83802 and stacks with every fabric liner in the entire Omega line.



Pairing Arielle with Volta invites creativity designing striking combinations as well as providing new solutions for framing larger pieces and wall mirrors.



84308



84309



84310



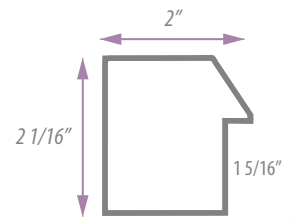
84307



84306

Volta

New 2" items



Gio

The Gio Collection is a colorful and whimsical collection of five items that is truly transitional and dynamic. Soft metal patinas are featured, creating contrasts and interesting plays of shadow and light. There are numerous tonal subtleties within each finish, allowing a designer to try multiple samples within this collection for the same piece, all depending on the eye of the beholder.

A deep reverse swan profile leads to a flat cap top that creates a reflective plateau surrounding the artwork.

Gio's overall aesthetic is tranquil and refined but can be used for dramatic effect when creativity strikes. Light and ethereal 84275 (white-silver), and 84278 (slate-violet), are brilliant and soft, appealing for designing with pastel color palettes and impressionist style works. A blend of warm and cool is displayed on 84276 (beige-silver) with a terracotta weathered finish on silver. The earthy contrasts of 84277 (brown-gold) is more dramatic as is the stunning 84279 (black-gold). This collection is sure to be a favorite for designers who have an eye for the unique.

Art (right): **Breaking The Cycle**, Duy Huynh c.2020 ▷



The Gio Collection is handmade in Italy

◁ Multi-Use, Multi-Hues

While designing with Gio, one must know ahead of time to "expect the unexpected." There's something about those hues and reflections that makes one try them all. Whether you intend to be imaginative or practical, you'll find yourself in full designer mode. The finish is somewhat reminiscent of Venetian plaster or fresco where, depending on the light, can cast a different color on second glance. This will lead to innovative color decisions on mat board choices and for the more creative-minded, you will express your design skills to the fullest.

☆ Gio is a nice companion to the Volta Collection.

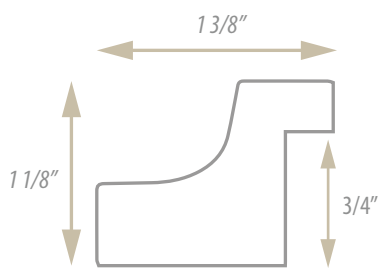
◁ Art (left): **Anemone**, William Morris c.1876



84276



84277



84279



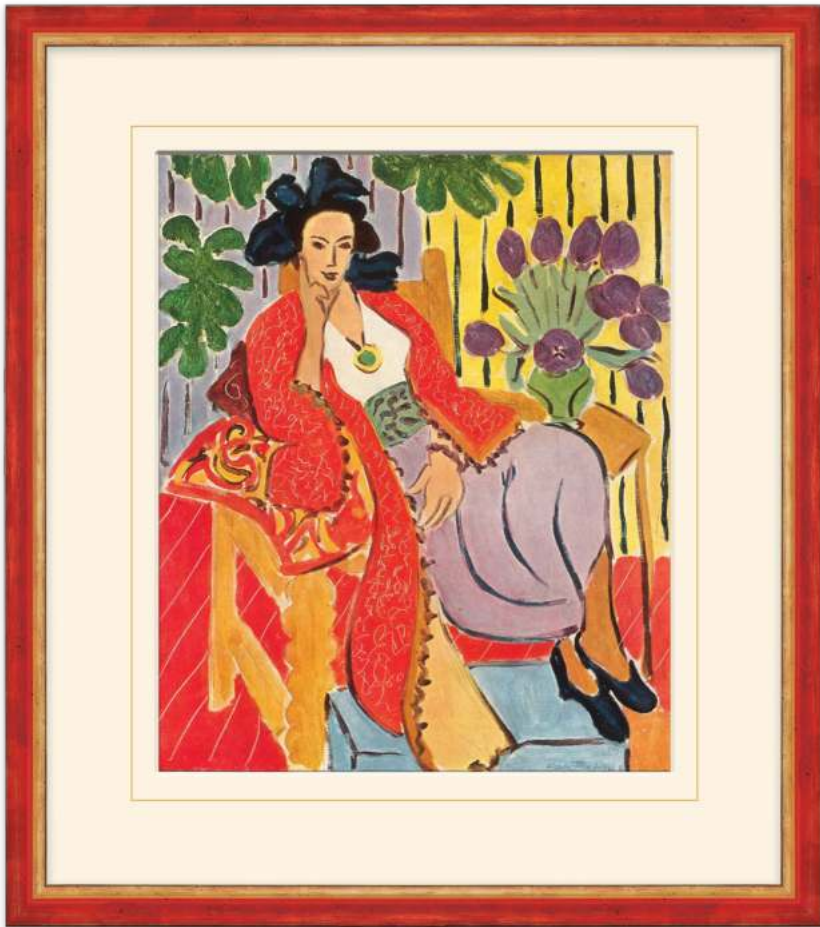
84278



84275

Gio





YORK

York features 7 items with a small traditional profile and clean lines that is simple but far from boring. Gold, silver and plum lead the pack for their universal appeal, while its remaining castmates boast some scene stealing attraction for those seeking a touch of something new.

Roman Red (84250) is bold and punchy and is sure to become an instant classic, providing eye-catching interest for art that demands attention. For more sophisticated looks, Baltic blue (84254), Slate (84252), and Black (84249) each feature a silver lip and bring life to a wide array of framing designs, as well as unifying collections and creating gallery wall compositions.

Each of the hand-applied finishes showcase the richness of layered color and gilding. Fine brush lines provide luster and depth, enhancing each color with sublime highlights upon the wax rubbed surface.

This collection is ideal for customers looking for petite profiles with an original take on classic charm.

Art (left): **Odalisque with the Red Coat**, Henri Matisse c.1937



The York Collection is handmade in Italy

Art (below left): **The Son of Man**, Rene Magritte c.1964

Art (below right): **Bocca Rossa**, Piero Fornasetti c.1953



△ Gallery Gems

The combination of York's profile size and color array make for creative compositions on gallery walls by unifying shape and size while giving us seven color choices for bespoke designs.



84250

YORK



84254



84252

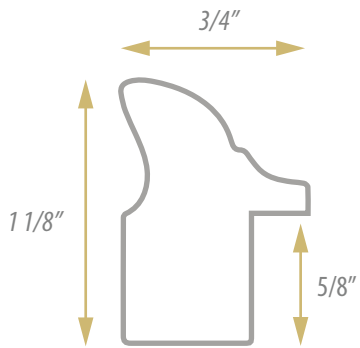


84249

84253

84251

84255



EPOQUE

Designed to impress with its textural contrast and technical virtuosity, the Epoque collection will appeal to fans of warmth and texture. The highly reflective ribbon scoop panel is nestled into a profile that surrounds the fascia with a tasteful wood grain texture.

This collection elegantly connects the outside natural world with the warmth and brightness of the metallic finishes. The finished product will elevate your customer's artwork to a high level while integrating seamlessly with the more natural tones of their interior.

Epoque's lines and finishes are ideal for projects that involve decorative art period genres of the 1900's such as art deco, art nouveau, and retro modern. The fluid texture, lustrous metals, and architectural lines bring forth a graceful modernity and glamour to interior spaces as well as complementing pieces with strong lines and decorative attributes. The collection pairs well with framing designs that employ unique matting designs such as multi-level creations, textural fabric surfaces, and painted lines.

The collection is bouyed by finishes in Gold (84268), bright Silver (84265), Champagne (84267), and oxidized Gunmetal (84266). Silver and Gunmetal finishes are reminiscent of mercury glass in different ages of patina.



The Epoque Collection is handmade in Italy



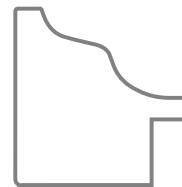
△ Art (above): *Polyanthus*, Alphonse Mucha c.1899

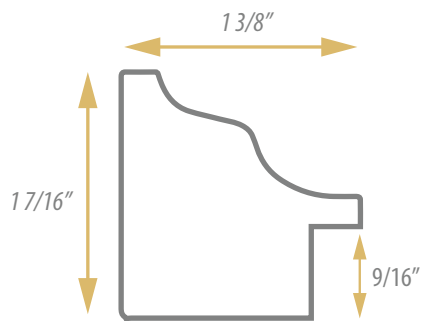


◁ Organically Speaking

The curvy scalloped lines of Epoque's profile creates a stage for the organic silhouettes and geometric shapes seen throughout modern art in the last century. Epoque is a perfect collection to experiment with shape and light to create something totally unexpected.

◁ Art (left): *Superimposed Forms*, Jessica Dismorr c.1938





EPOQUE



84267



84266



84265

84268

Carlyle

Carlyle is a traditional profile with a modern twist. The luster and sparkle of modern gilding updates the look of the classic petite scoop adding a touch of sophistication. A delicate deboss is a contemporary treatment to the traditional beaded lip of classical mouldings of past eras. These subtle adjustments in design help streamline the overall look and convey a sense of fine workmanship.

The new styling allows the graceful scoop to be utilized on a wider range of artwork. The metallic finishes get a softer treatment, creating a lightness to the collection's palette in order to work with today's interior color schemes and art genres such as digital prints, illustration and color/black and white photography.

The collection can also be used to bridge styles within a setting where more traditional art and framing are present. Carlyle is naturally a lovely collection for collectibles, antiques, documents, drawings, etchings and fine art prints. Now, it can be shared with the art and home decor in today's market. Artists and designers will now have present-day classics at their disposal to create not only something new, but something that is timeless



Art (right): *Silver Eye, The Bell Bird*, Walter Lawry Buller c.1888 ▷

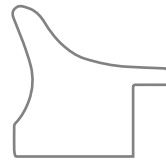


The Carlyle Collection is handmade in Italy



Classically Photogenic

At first glance, this collection may only seem traditional, but just look at what it can do for photography. What else can you use traditional profiles for? They call them classics for a reason.



Carlyle

1 1/8" scoop profile with 9/16" rabbet



84256



84257



84259



84258



84260

PARKER

The Parker Collection gives us two looks; a handsome traditional classic with warm furniture finishes, as well as Mid-Century modern elegance. This duality is well sought after in today's market, bridging traditional interior design motifs with more modern tastes in both art and home design. Art and home accessories play an important part in helping to fuse sleek modern home tech in our interior spaces with elements that are naturally more in tune with visual appeal and comfort.

Classics that can pull off modern will make Parker a new standard "go-to" for Picture Framers and designers alike. With the most popular trends in art and home decor staying consistent with these motifs, it delivers solutions for fine art (paintings, etchings, and drawings) to contemporary (photography, serigraphs, and graphic art.)

Parker is a great companion to **Carlyle** and **York** collection mouldings. Gold, silver, black and plum selections from each can be used together in a series, on the same wall, or combined in a single design.



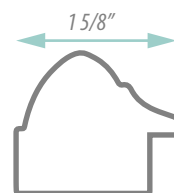
△ Art (above): **Four Dancers**, Edgar Degas c.1899



The Parker Collection is handmade in Italy

◁ Classic Example

By keeping it simple, a lot can be achieved in creating an undeniable winning combination that hits on style points and fits into multiple interior design settings. Staying with a clean design can be key to allow the artwork's beauty to take precedence. Scale is also important; Parker's 1 5/8" width can accommodate small and larger work both physically and visually.



◁ Art (left): **No Gravity**, Lilo c.2022



PARKER



84247



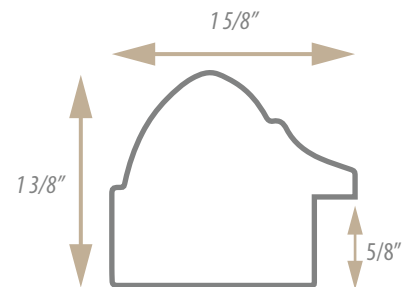
84248



84245



84246



AVA

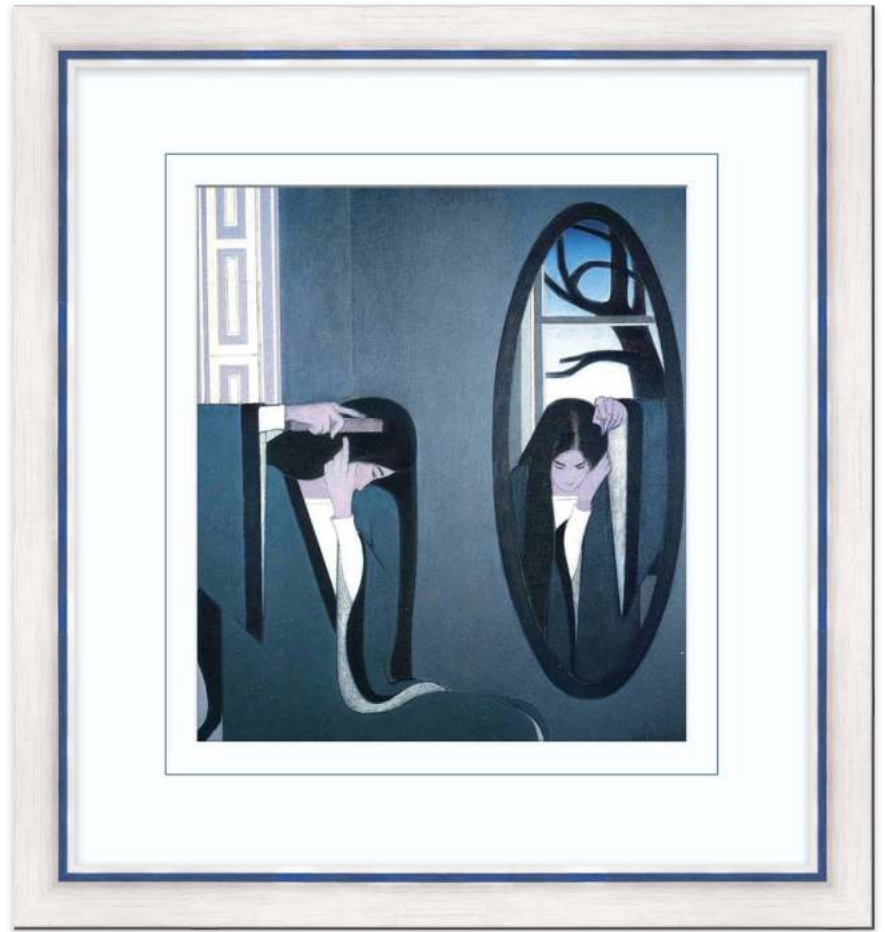
Ava is an elegant collection of three items that evokes a breezy coastal feel. The collection's aesthetic is designed to allow designers to introduce more sophisticated artwork into home settings with a clean tailored look, often seen in vacation homes.

Eternally popular coastal design, also known as 'beachy-chic', is recognized by the use of natural textures where materials such as rope, wicker, and driftwood are commonly employed within the setting. Shades of white, watery hues and white washed wood and fabrics are popularly used in the fabrication of furniture, home accessories and artwork.

Ava's white brushed finish carries the collection into this style category, setting the mood with a clean and airy sensibility. The brush lines are streaked with shimmering highlights that cast reflection from light to dark to deliver its textural dynamic. Accented on the crest with crisp gold (84280), silver (84281), and navy blue (84282); a nod to the nautical Ralph Lauren coastal home design palette popularized worldwide.



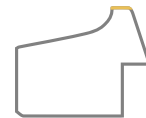
The collection's bright white finish was selectively curated for its compatibility with modern digital printing papers.



△ Art (above): *The Mirror*, Will Barnet c.1981



The Ava Collection is handmade in Italy



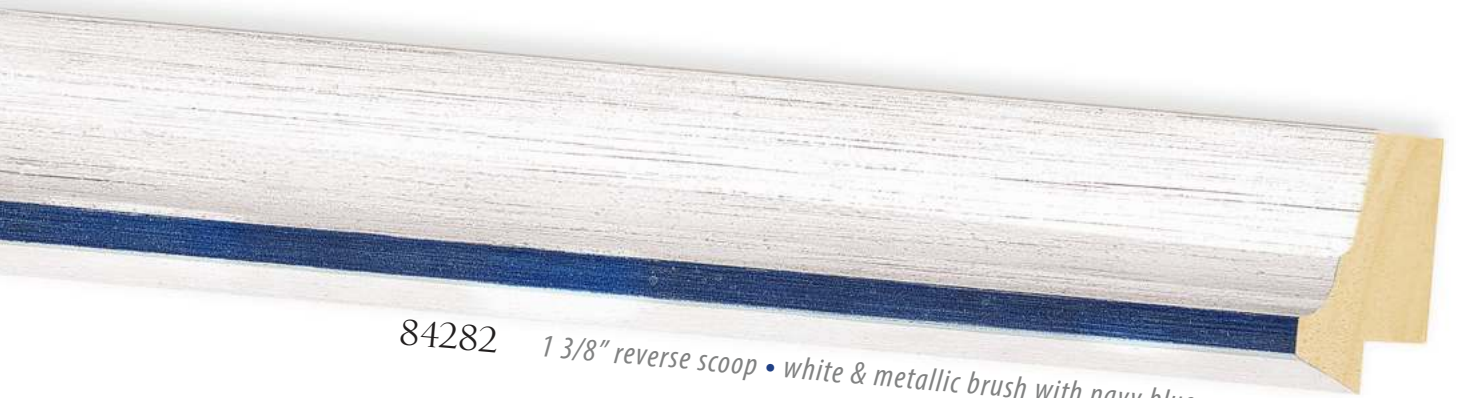
◁ **Warm Tones, Cool Looks**

One shouldn't hesitate to use brushed white mouldings for only cool color pairings. Warm hues, jewel tones, and bolder saturated colors can be cooled down with the airiness of white. Here, the gold accent on 84280 can bring it all together, pulling out the earthy browns and sunny yellows while complementing the bright blue and greens.

◁ Art (left): *Agave*, K. Nari c.2018



AVA



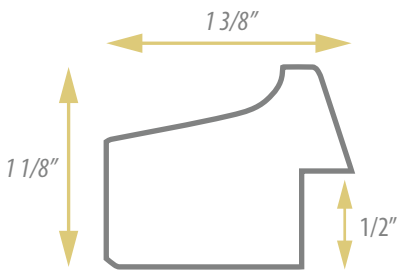
84282 1 3/8" reverse scoop • white & metallic brush with navy blue crest



84281 1 3/8" reverse scoop • white & metallic brush with silver crest



84280 1 3/8" reverse scoop • white & metallic brush with gold crest



LOFT

Loft is a collection of pewter and gold items that have been toned and heavily textured to convey the look of raw, unrefined galvanized steel and bronze. This industrial look is produced to work with artwork and interior spaces in a variety of ways that enhance and reinforce characteristics within the aesthetics of each.

Industrial style focuses on the three components of strength, gravity, and architecture. The Loft Collection draws from these within its profile shape, colors, and proportion. Two geometric profiles were designed; the broad flat panel of 84261 (gold), and 84262 (pewter) are 2 1/2" wide and are ideal for large format framing as well as artwork that calls for bolder presentation. The second profile's sharp peak emphasizes the architectural lines a bit more in the 1 7/16" wide silhouette of 84263 (gold) and 84264 (pewter). The rough pitted metallic look gives the grouping its heavy feel, thus successfully uniting the elements to produce the intended design aspiration.

Loft mouldings are beautifully showcased on modern art pieces, exhibiting similar attributes of geometry, simple form and line, construction, abstraction, and dimension. Scale and size are also factored into designing with Loft. Large installation spaces can be magnificently outfitted by its bold architectural specs, making Loft great for hotels, galleries, showrooms, and open plan living spaces.

Art (right): *Oli Sobre Fusta*, Ricard Tovar c.2021 ▷



The Loft Collection is handmade in Italy

◁ In Great Shape

Geometric shapes aren't always as strict and cold as you would think. Even though they almost work on everything, the hard edges can be too defined on mouldings with opaque finishes. With Loft, you can expand the field of possibility and be creative in utilizing the collection for watercolors and oil paintings, or any other art application or subject matter that has blended pigments, softer lines, or subtle details. By way of its texture and variegated appearance, it can be used as an elegant solution for those pieces you may yet to consider.

◁ Art (left): *Les Coureurs*, Robert Delaunay c.1920

LOFT



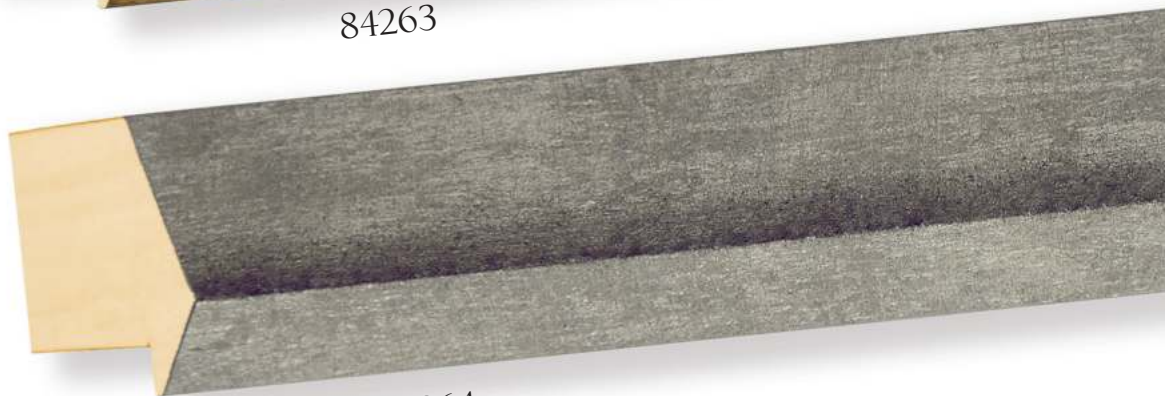
84261



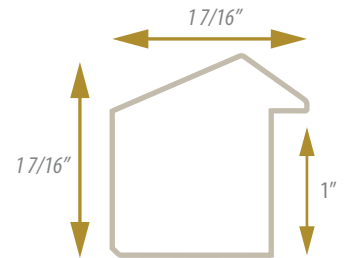
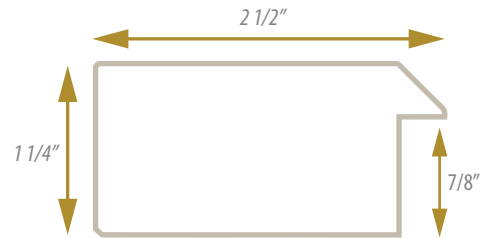
84262



84263



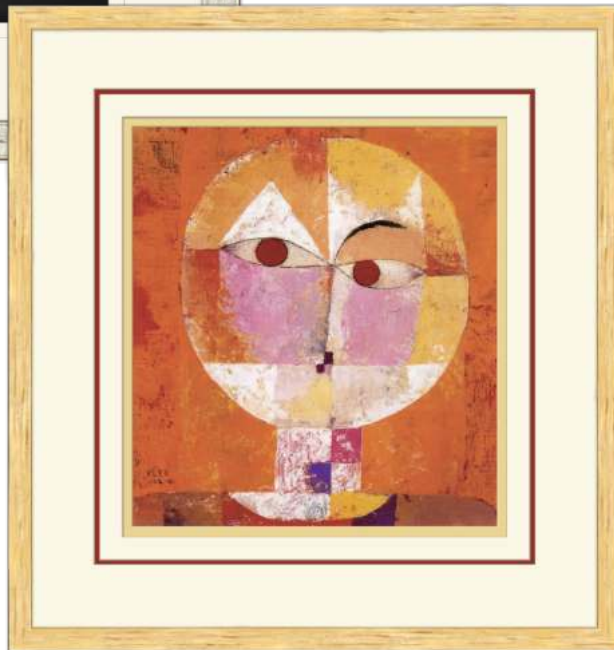
84264



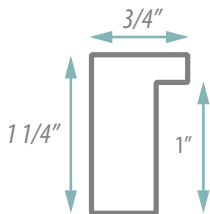
GEHRY

Gehry is a classic modern collection with an industrial aesthetic, rendered in the textural complexity of grinded metal on a geometric profile. Plays of light are produced in the radial swirls and streaks and is the star of the show, introducing a new and unique finish for picture framing artwork in a variety of interior design schemes.

Five finishes equally showcase the coolness and warmth of metal; silver (84283), champagne (84284), and pewter (84285) are beautiful accompaniments to black and white photography, etchings, graphic art, and art with neutral tones. Copper (84286) and gold (84287) bring life to more colorful media and modern art, color photography, lithographs, and watercolors, as well as transitioning many genres of art into a single design theme, such as gallery walls, and framing art collections. Gehry's 1" rabbet allows for framing works on canvas and dimensional work requiring spacer and shadow box applications.



The Gehry Collection is handmade in Italy



△ Art (Top left):

Butterfly (pigment photograph)
Mark Shaw, c.1950

◁ Art (left):

Senecio
Paul Klee, c.1922



Walt Disney Concert Hall · Los Angeles, California



◁ **Brightly Inspired**

The Gehry collection pays homage to the beautiful polished steel architecture of Frank Gehry and the appealing brilliance of grinded metal artwork.

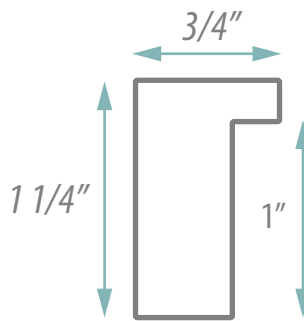
GEHRY



84283



84284



84285



84286

84287





OMEGA⁺
MOULDING COMPANY

WWW.OMEGAMOULDING.COM

1-800-289-6634 • 1-800-BUY-OMEGA

© Copyright 2024 Omega Moulding Company